



 **evansjones** | Case Study

Access Audit

University West of England

To view more case studies visit: www.evansjones.co.uk/case-studies

Cheltenham (HQ)

☎ Call us on 01242 522822

✉ cheltenham@evansjones.co.uk

London

☎ Call us on 0207 129 7980

✉ london@evansjones.co.uk

Thames Valley

☎ Call us on 0118 322 4646

✉ thamesvalley@evansjones.co.uk



Project Overview:

Evans Jones has been working with UWE for the last 10 years and over this time was appointed to carry out Access Audits of Frenchay, Glenside, St Matthias, Bower Ashton and Hewlett Packard campuses. We also completed specific audit exercises of power assisted doors and residential accommodation as well as appraisals of new developments.

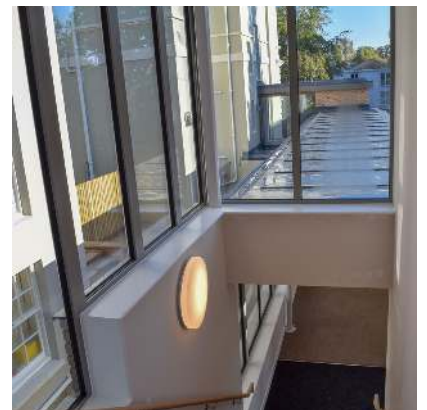
Challenges:

The main challenge of these audits was the sheer scale of the sites and buildings involved as well as understanding how students moved around the site and used the buildings.



Service: Access Audits

Location: Bristol



Results:

All audits were completed to the agreed programme by a small team of trained auditors who were able to deliver consistent results. Cross referencing of recommendations to building plans also assisted in identifying individual items of work across a vast portfolio. Consulting with the 'disabled student support' unit and disabled students also helped us to get a better understanding of how students used the sites.